



What is St Piers School?

St Piers School is a non-maintained residential special school which provides both day and residential education places for children and young people aged 5 to 19. It is a member of the National Association of non-maintained and Independent Special Schools (NASS); Entitlement and Quality Education for Pupils with Severe Learning Difficulties (EQUALS); Nasen and the British Institute of Learning Difficulties (BILD).

It is part of The National Centre for Young People with Epilepsy (NCYPE), the UK's leading provider of specialist services for children and young people with complex epilepsy and other neurological conditions. The NCYPE as a whole provides residential and day special education, care, treatment, therapy support, outreach, assessment and rehabilitation for 5 to 25 year olds from across the UK.

Together with The NCYPE's Further Education College, the School provides education places for around 200 children and young people.

The School

Whilst the School's specialism has traditionally been epilepsy, it now uses its expertise and multidisciplinary approach to cater for a wider range of complex neurological conditions including autism and attention deficit hyperactivity disorder (ADHD), as well as complex epilepsy. Support is also provided for some aspects of challenging behaviour, profound and multiple learning difficulties and severe learning difficulties.

The majority of students are funded by their Local Education Authority supported by Health and Social Services.

The curriculum

The School delivers a comprehensive programme based on the National Curriculum, modified as necessary, to ensure the needs of every student are met.

The curriculum promotes the cognitive, spiritual, moral, emotional and physical developments of students, helping to prepare them for adult life. Learning takes place throughout the waking day, both within the School and the residential or home environment, offering opportunities for students to achieve and be challenged.

Each student is given their own tailored Individual Education Programme (IEP) which is reviewed every six weeks, at multidisciplinary meetings and during Annual Reviews. The curriculum is managed and reviewed at all levels through observation and is appraised yearly.

The Core Curriculum comprises English (Communication, Language and Literature); Mathematics; Information and Communication Technology (ICT); Personal, Social and Health Education (PSHE) and Citizenship.

Art; Design Technology; Humanities; Music; Modern Foreign Language; Science; Creative Arts and Religious Education are included within the Foundation Curriculum which is taught through a thematic approach using rolling programmes. Creative Arts and Physical Education (PE) are taught to all students.

Values

The School learning environment ensures:

- Students and staff are respected as individuals
- Students are involved in their own learning

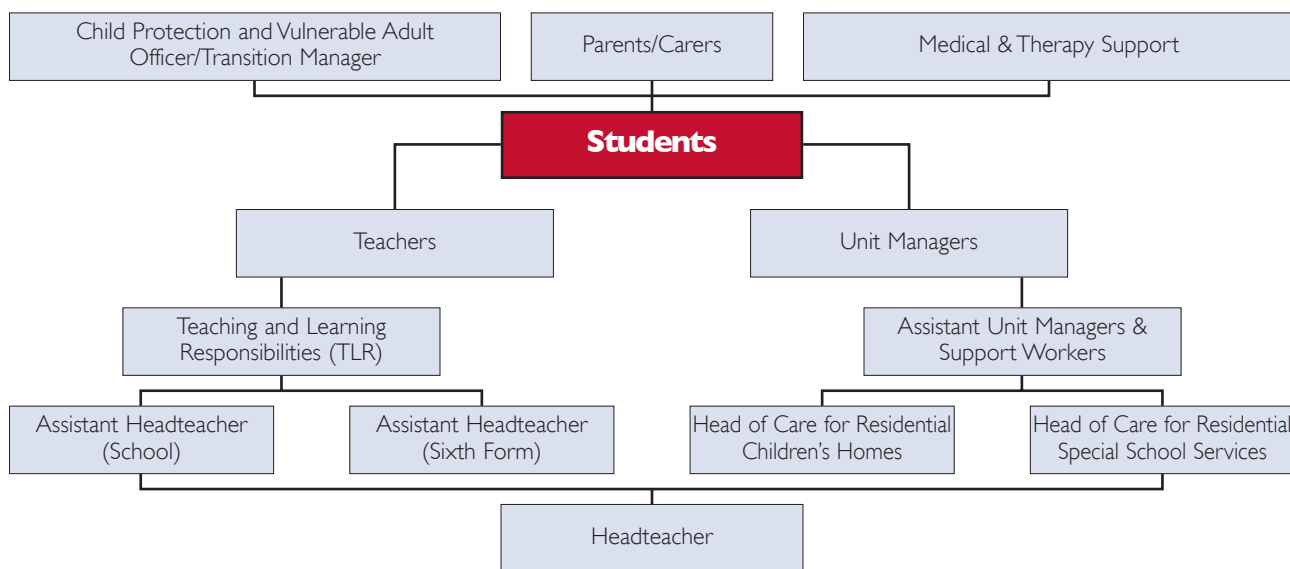
- Students have the opportunities to achieve at their highest possible level
- There is equal and inclusive access to the curriculum
- Students' educational, emotional, cultural, physical and health needs are met through a multidisciplinary approach involving Specialist Teams of Teachers, Residential Staff, Doctors, Nurses, Psychologists, Speech and Language Therapists, Occupational Therapists, Physiotherapists, Play Specialists, and Support Staff
- Access to a continuous and progressive curriculum
- Progress is regularly assessed and reviewed
- The outcomes of the Government's Every Child Matters framework are addressed

Sixth form

The St Piers School sixth form enables students to continue their learning to age 19 and continues the values and ethos of the School. Students' achievements are recognised through a range of accredited schemes including the EQUALS 'Moving On' programme, the National Skills Profile and AQA Unit Awards.

Residential provision

Places are available for students to live in one of The NCYPE's onsite residential houses during term time. For those whose complex needs require specialist support beyond term time an all year round residential children's home service has been developed.



Contact us to find out more:

St Piers School, The National Centre for Young People with Epilepsy, St Piers Lane, Lingfield, Surrey RH7 6PW

Tel: 01342 831 229 or for admission information: 01342 831 348

Fax: 01342 834 639

E-mail: info@ncype.org.uk

www.ncype.org.uk

Registered as a non-profit making charity No. 311877 Company Limited by Guarantee No. 756798